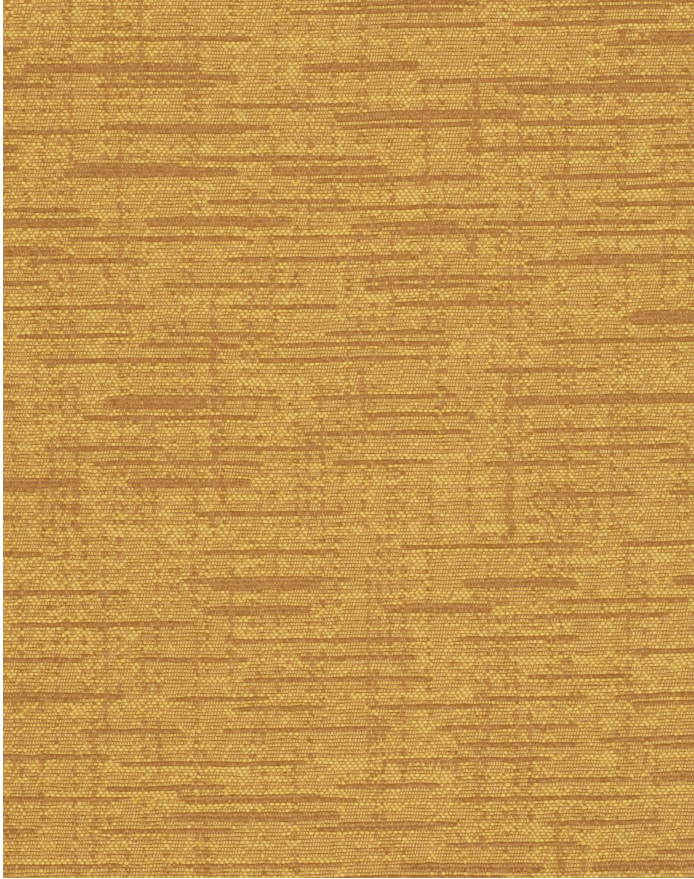


SHANTUNG TOPAZ

373-002

MAYER FABRICS



CATEGORY

Seating/Panel

PROPERTIES



CONTENT

100% Recycled Polyester (65% Pre-/35% Post-Consumer)

ADDITIONAL FINISHING AVAILABLE (CHECK FOR PRICING)

Nano-Tex, NanoGuard

FINISH

None

WIDTH

54"

WEIGHT

10.69

SHOWN RAILROADED

No

DIRECTIONALITY

Yes

ROLL LENGTH

55

VISUAL REPEAT

15.0, 12.88 Non-Matching

BREAKING STRENGTH

Warp: 251.0 lbs. / Fill: 132.0 lbs.

SEAM SLIPPAGE

Warp: 35.0 lbs. / Fill: 77.0 lbs.

ABRASION RESISTANCE

Passes 51,000 Double Rubs (Wyzenbeek/Cotton Duck) *

* Abrasion test results exceeding ACT Performance Guidelines are not an indicator of product lifespan.

PILLING RESISTANCE

Class: 5

COLORFASTNESS TO CROCKING

Dry: Class 4 min / Wet: Class 3 min

COLORFASTNESS TO LIGHT

40 hours

CLEANING

WS: Water/Solvent Cleaner - Spot clean with a mild solvent, an upholstery shampoo, or the foam from a mild detergent. When using a solvent or dry cleaning product, follow instructions carefully and clean only in a well-ventilated room. Avoid any product that contains carbon tetrachloride or other toxic materials. With either method, pretest a small area before proceeding. Always rinse promptly with clean water.

BC: Bleach Cleanable - 1 parts bleach, 9 parts water = 10% bleach, 90% water solution. Do not clean / disinfect fabric for longer than 10 minutes using the 10% bleach solution. Always rinse promptly with clean water after applying the bleach solution. Failure to do so will void any and all warranties.

[Additional cleaning details at www.mayerfabrics.com](http://www.mayerfabrics.com)



© Mayer Fabrics 2025

Specifications are subject to change. Current specifications are available at mayerfabrics.com
Mayer Fabrics | 500 S. Kitley Ave, Indianapolis, IN 46219

TF. 800.428.4415
T. 317.267.2626
F. 317.267.2629