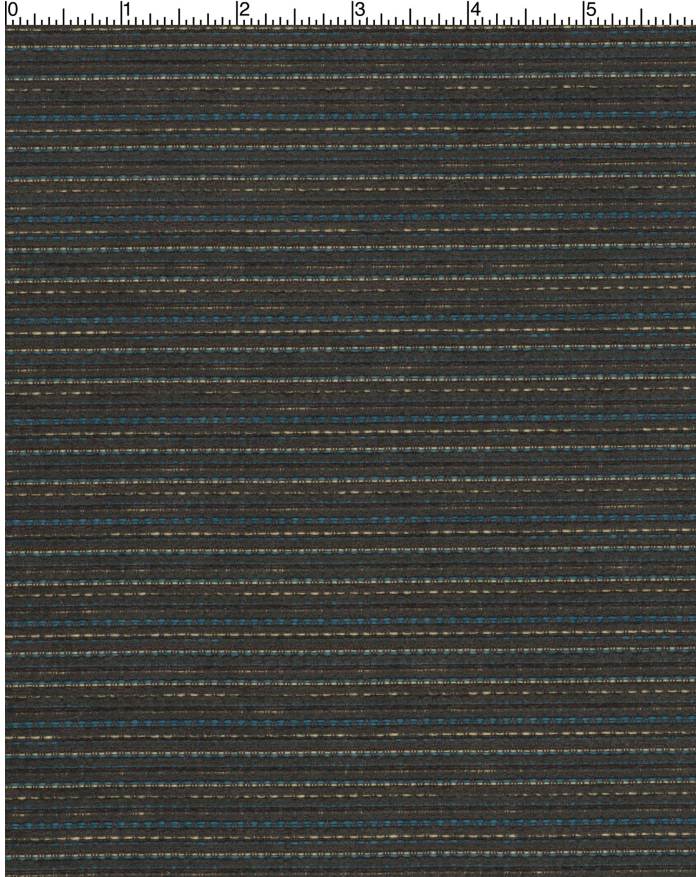


VENUE SLATE

359-016

MAYER FABRICS



CATEGORY
Seating/Panel

PROPERTIES

CONTENT
100% Recycled Polyester (60% Pre-/40% Post-Consumer)/60% Recycled Polyester/40% Recycled Polyester

**ADDITIONAL FINISHING AVAILABLE
(CHECK FOR PRICING)**
Nano-Tex, NanoGuard

FINISH
None

WIDTH
54"

WEIGHT
7.8

SHOWN RAILOADED
No

DIRECTIONALITY
Yes

ROLL LENGTH
60

VISUAL REPEAT
1.2, 1.75

BREAKING STRENGTH
Warp: 159.0 lbs. / Fill: 115.0 lbs.

SEAM SLIPPAGE
Warp: 39.0 lbs. / Fill: 41.0 lbs.

ABRASION RESISTANCE
Passes 60,000 Double Rubs (Wyzenbeek/Cotton Duck) *
* Abrasion test results exceeding ACT Performance Guidelines are not an indicator of product lifespan.

PILLING RESISTANCE
Class: 4

COLORFASTNESS TO CROCKING
Dry: Class 4 / Wet: Class 4

COLORFASTNESS TO LIGHT
40 hours

CLEANING

WS: Water/Solvent Cleaner - Spot clean with a mild solvent, an upholstery shampoo, or the foam from a mild detergent. When using a solvent or dry cleaning product, follow instructions carefully and clean only in a well-ventilated room. Avoid any product that contains carbon tetrachloride or other toxic materials. With either method, pretest a small area before proceeding. Always rinse promptly with clean water.

[Additional cleaning details at www.mayerfabrics.com](http://www.mayerfabrics.com)



© Mayer Fabrics 2025

Specifications are subject to change. Current specifications are available at mayerfabrics.com
Mayer Fabrics | 500 S. Kitley Ave, Indianapolis, IN 46219

TF. 800.428.4415
T. 317.267.2626
F. 317.267.2629