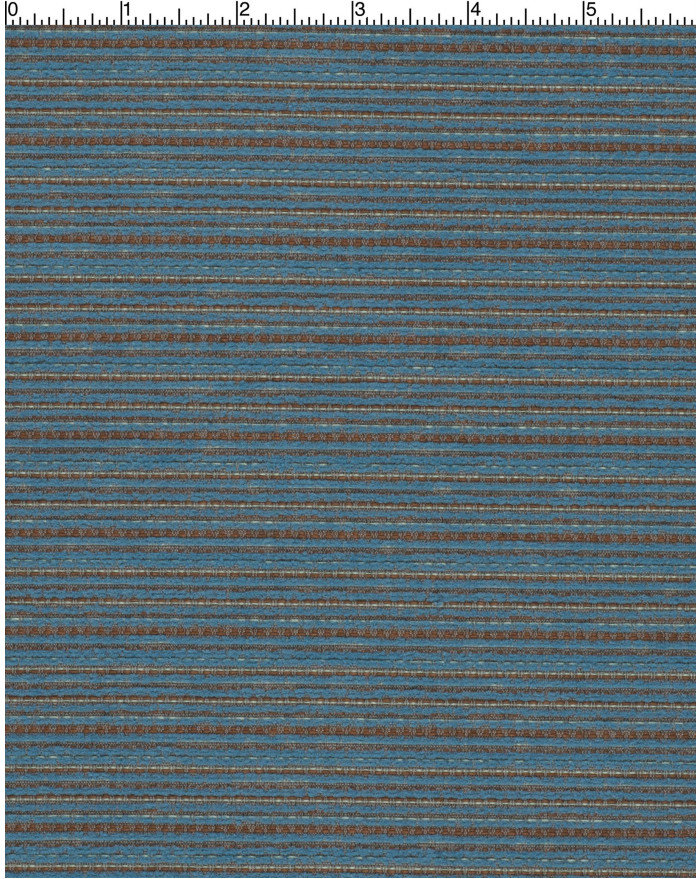


# VENUE BLUEBELL

359-014

# MAYER FABRICS



**CATEGORY**  
Seating/Panel

**PROPERTIES**

**CONTENT**  
100% Recycled Polyester (60% Pre-/40% Post-Consumer)/60% Recycled Polyester/40% Recycled Polyester

**ADDITIONAL FINISHING AVAILABLE  
(CHECK FOR PRICING)**  
Nano-Tex, NanoGuard

**FINISH**  
None

**WIDTH**  
54"

**WEIGHT**  
7.8

**SHOWN RAILROADED**  
No

**DIRECTIONALITY**  
Yes

**ROLL LENGTH**  
60

**VISUAL REPEAT**  
1.2, 1.75

**BREAKING STRENGTH**  
Warp: 159.0 lbs. / Fill: 115.0 lbs.

**SEAM SLIPPAGE**  
Warp: 39.0 lbs. / Fill: 41.0 lbs.

**ABRASION RESISTANCE**  
Passes 60,000 Double Rubs (Wyzenbeek/Cotton Duck) \*  
\* Abrasion test results exceeding ACT Performance Guidelines are not an indicator of product lifespan.

**PILLING RESISTANCE**  
Class: 4

**COLORFASTNESS TO CROCKING**  
Dry: Class 4 / Wet: Class 4

**COLORFASTNESS TO LIGHT**  
40 hours

## CLEANING

**WS: Water/Solvent Cleaner** - Spot clean with a mild solvent, an upholstery shampoo, or the foam from a mild detergent. When using a solvent or dry cleaning product, follow instructions carefully and clean only in a well-ventilated room. Avoid any product that contains carbon tetrachloride or other toxic materials. With either method, pretest a small area before proceeding. Always rinse promptly with clean water.

[Additional cleaning details at www.mayerfabrics.com](http://www.mayerfabrics.com)



© Mayer Fabrics 2025

Specifications are subject to change. Current specifications are available at [mayerfabrics.com](http://mayerfabrics.com)  
Mayer Fabrics | 500 S. Kitley Ave, Indianapolis, IN 46219

TF. 800.428.4415  
T. 317.267.2626  
F. 317.267.2629