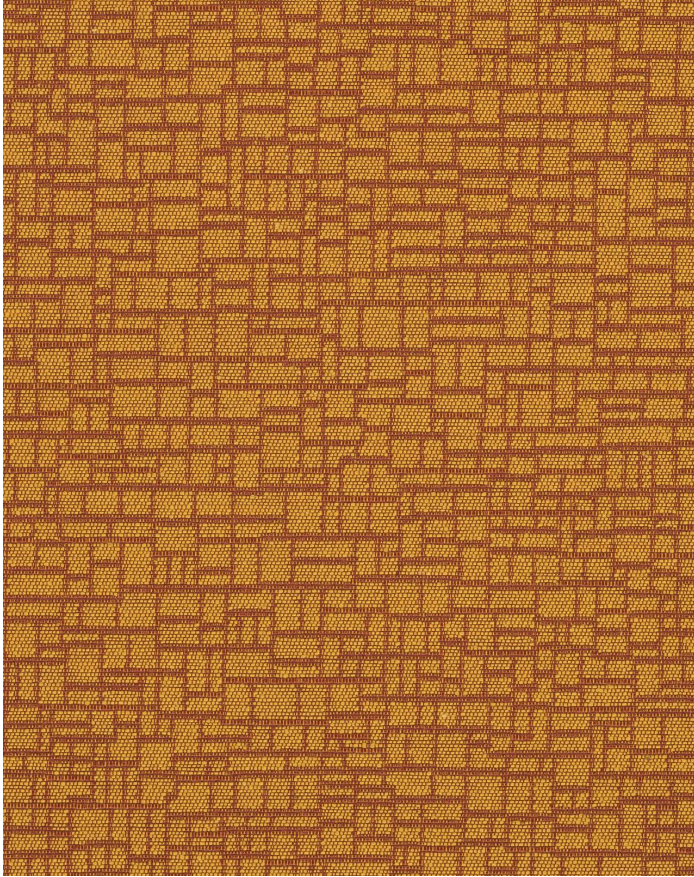


# MOSAIC MANGO

349-009

# MAYER FABRICS



## CLEANING

**S: Solvent Cleaner** - Spot clean, using a mild water-free solvent or dry cleaning product. Clean only in a well-ventilated room and avoid any product containing carbon tetrachloride or other toxic materials. Pretest a small area before proceeding. Always rinse promptly with clean water.

[Additional cleaning details at www.mayerfabrics.com](http://www.mayerfabrics.com)

## CATEGORY

Seating

## PROPERTIES



## CONTENT

57% Cotton/43% Polyester

## ADDITIONAL FINISHING AVAILABLE (CHECK FOR PRICING)

Nano-Tex, NanoGuard

## FINISH

Nanotex®

## WIDTH

54"

## WEIGHT

12.64

## SHOWN RAILROADED

No

## DIRECTIONALITY

Yes

## ROLL LENGTH

60

## VISUAL REPEAT

14.38, 13.25 Random Match

## BREAKING STRENGTH

Warp: 100.0 lbs. / Fill: 75.0 lbs.

## SEAM SLIPPAGE

Warp: 81.0 lbs. / Fill: 50.0 lbs.

## ABRASION RESISTANCE

Passes 100,000 Double Rubs\* (Wyzenbeek/Cotton Duck) \*

\* Abrasion test results exceeding ACT Performance Guidelines are not an indicator of product lifespan.

## PILLING RESISTANCE

Class: 3

## COLORFASTNESS TO CROCKING

Dry: Class 4 / Wet: Class 3

## COLORFASTNESS TO LIGHT

40 hours