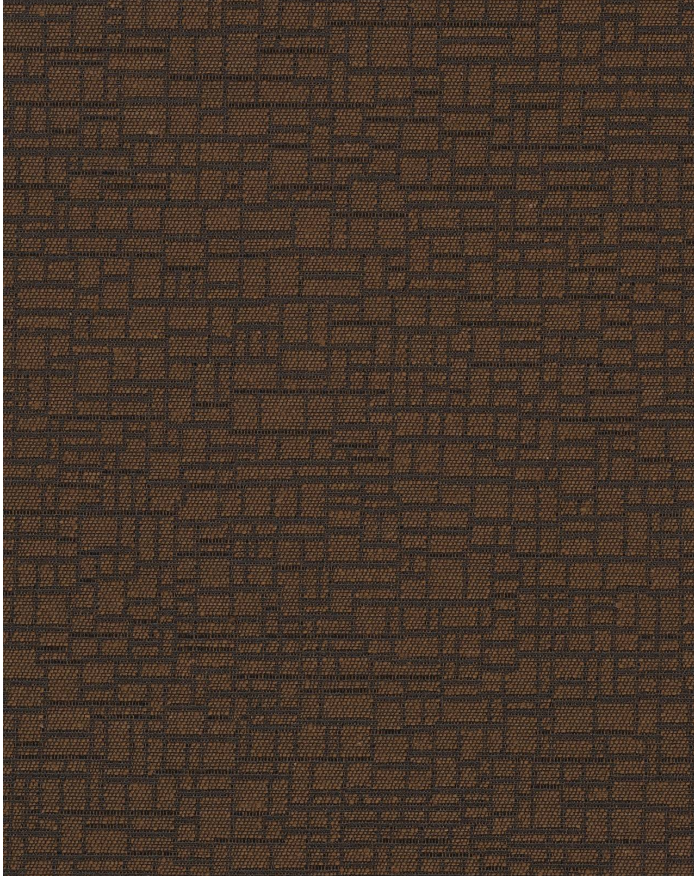


MOSAIC ESPRESSO

349-000

MAYER FABRICS



CATEGORY
Seating

PROPERTIES

CONTENT
57% Cotton/43% Polyester

**ADDITIONAL FINISHING AVAILABLE
(CHECK FOR PRICING)**
Nano-Tex, NanoGuard

FINISH
Nanotex®

WIDTH
54"

WEIGHT
12.64

SHOWN RAILROADED
No

DIRECTIONALITY
Yes

ROLL LENGTH
60

VISUAL REPEAT
14.38, 13.25 Random Match

BREAKING STRENGTH
Warp: 100.0 lbs. / Fill: 75.0 lbs.

SEAM SLIPPAGE
Warp: 81.0 lbs. / Fill: 50.0 lbs.

ABRASION RESISTANCE
Passes 100,000 Double Rubs* (Wyzenbeek/Cotton Duck) *
* Abrasion test results exceeding ACT Performance Guidelines are not an indicator of product lifespan.

PILLING RESISTANCE
Class: 3

COLORFASTNESS TO CROCKING
Dry: Class 4 / Wet: Class 3

COLORFASTNESS TO LIGHT
40 hours

CLEANING

S: Solvent Cleaner - Spot clean, using a mild water-free solvent or dry cleaning product. Clean only in a well-ventilated room and avoid any product containing carbon tetrachloride or other toxic materials. Pretest a small area before proceeding. Always rinse promptly with clean water.

[Additional cleaning details at www.mayerfabrics.com](http://www.mayerfabrics.com)