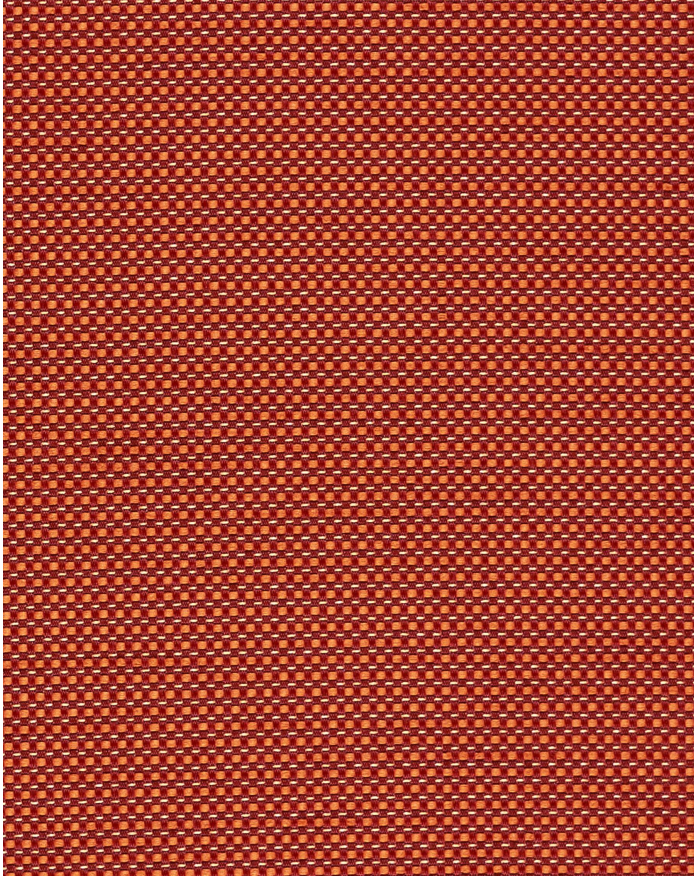


DAZZLE CINNABAR

319-011

MAYER FABRICS



CATEGORY
Seating

PROPERTIES

CONTENT
95% Recycled Polyester (6% Pre-/89% Post-Consumer)/89% Recycled Polyester/6% Recycled Polyester/5% Polyester

**ADDITIONAL FINISHING AVAILABLE
(CHECK FOR PRICING)**
Nano-Tex, NanoGuard

FINISH
Stain Repellent

WIDTH
54"

WEIGHT
11.25

SHOWN RAILROADED
No

DIRECTIONALITY
Yes

ROLL LENGTH
60

VISUAL REPEAT
0.14, 0.13

BREAKING STRENGTH
Warp: 190.0 lbs. / Fill: 312.0 lbs.

SEAM SLIPPAGE
Warp: 120.0 lbs. / Fill: 54.0 lbs.

ABRASION RESISTANCE
Passes 80,000 Double Rubs (Wyzenbeek/Cotton Duck) *
* Abrasion test results exceeding ACT Performance Guidelines are not an indicator of product lifespan.

PILLING RESISTANCE
Class: 4

COLORFASTNESS TO CROCKING
Dry: Class 4 min / Wet: Class 4 min

COLORFASTNESS TO LIGHT
60 hours

CLEANING

WS: Water/Solvent Cleaner - Spot clean with a mild solvent, an upholstery shampoo, or the foam from a mild detergent. When using a solvent or dry cleaning product, follow instructions carefully and clean only in a well-ventilated room. Avoid any product that contains carbon tetrachloride or other toxic materials. With either method, pretest a small area before proceeding. Always rinse promptly with clean water.

[Additional cleaning details at www.mayerfabrics.com](http://www.mayerfabrics.com)



© Mayer Fabrics 2025

Specifications are subject to change. Current specifications are available at mayerfabrics.com
Mayer Fabrics | 500 S. Kitley Ave, Indianapolis, IN 46219

TF. 800.428.4415
T. 317.267.2626
F. 317.267.2629