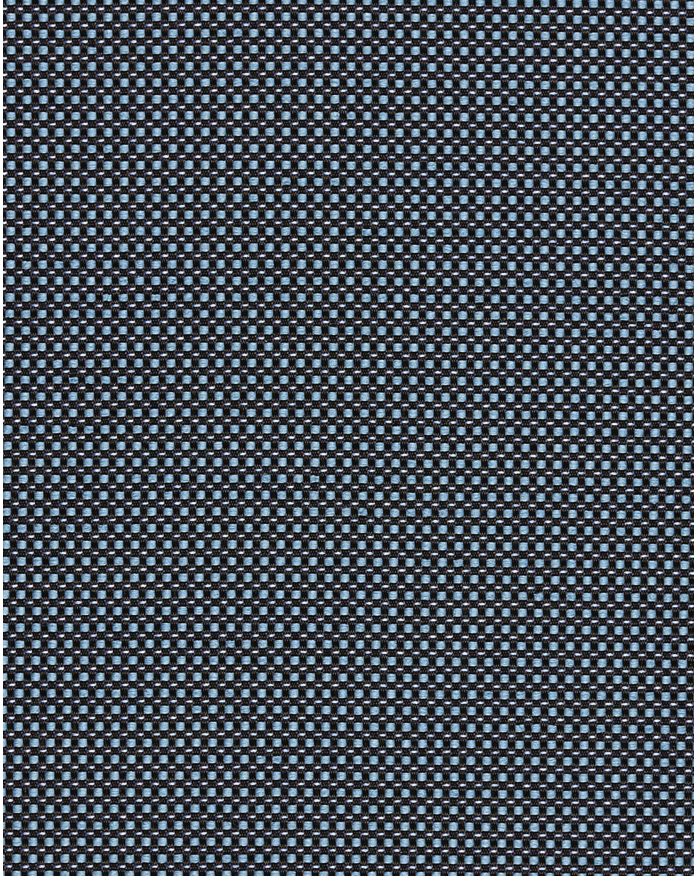


DAZZLE SAPPHIRE

319-004

MAYER FABRICS



CATEGORY

Seating

PROPERTIES



CONTENT

95% Recycled Polyester (6% Pre-/89% Post-Consumer)/5% Polyester

ADDITIONAL FINISHING AVAILABLE (CHECK FOR PRICING)

Nano-Tex, NanoGuard

FINISH

Stain Repellent

WIDTH

54"

WEIGHT

11.25

SHOWN RAILROADED

No

DIRECTIONALITY

Yes

ROLL LENGTH

60

VISUAL REPEAT

0.14, 0.13

BREAKING STRENGTH

Warp: 190.0 lbs. / Fill: 312.0 lbs.

SEAM SLIPPAGE

Warp: 120.0 lbs. / Fill: 54.0 lbs.

ABRASION RESISTANCE

Passes 80,000 Double Rubs (Wyzenbeek/Cotton Duck) *

* Abrasion test results exceeding ACT Performance Guidelines are not an indicator of product lifespan.

PILLING RESISTANCE

Class: 4

COLORFASTNESS TO CROCKING

Dry: Class 4 min / Wet: Class 4 min

COLORFASTNESS TO LIGHT

60 hours

CLEANING

WS: Water/Solvent Cleaner - Spot clean with a mild solvent, an upholstery shampoo, or the foam from a mild detergent. When using a solvent or dry cleaning product, follow instructions carefully and clean only in a well-ventilated room. Avoid any product that contains carbon tetrachloride or other toxic materials. With either method, pretest a small area before proceeding. Always rinse promptly with clean water.

[Additional cleaning details at www.mayerfabrics.com](http://www.mayerfabrics.com)



© Mayer Fabrics 2025

Specifications are subject to change. Current specifications are available at mayerfabrics.com
Mayer Fabrics | 500 S. Kitley Ave, Indianapolis, IN 46219

TF. 800.428.4415

T. 317.267.2626

F. 317.267.2629