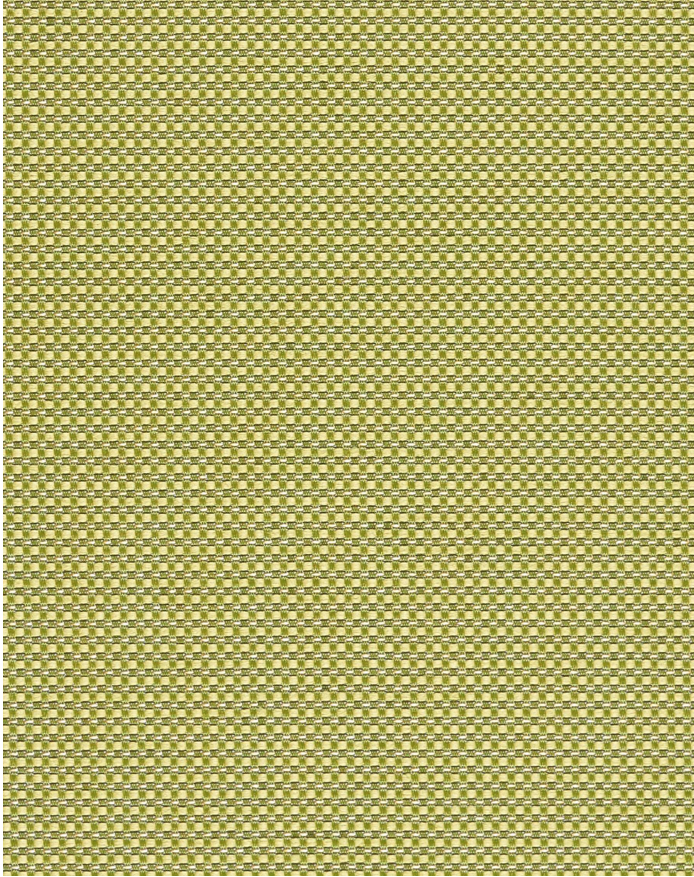


# DAZZLE LIMELIGHT

319-003

# MAYER FABRICS



## CATEGORY

Seating

## PROPERTIES



## CONTENT

95% Recycled Polyester (6% Pre-/89% Post-Consumer)/5% Polyester

## ADDITIONAL FINISHING AVAILABLE (CHECK FOR PRICING)

Nano-Tex, NanoGuard

## FINISH

Stain Repellent

## WIDTH

54"

## WEIGHT

11.25

## SHOWN RAILROADED

No

## DIRECTIONALITY

Yes

## ROLL LENGTH

60 yards

## VISUAL REPEAT

0.14, 0.13

## BREAKING STRENGTH

Warp: 190.0 lbs. / Fill: 312.0 lbs.

## SEAM SLIPPAGE

Warp: 120.0 lbs. / Fill: 54.0 lbs.

## ABRASION RESISTANCE

Passes 80,000 Double Rubs (Wyzenbeek) \*

\* Abrasion test results exceeding ACT Performance Guidelines are not an indicator of product lifespan.

## PILLING RESISTANCE

Class: 4

## COLORFASTNESS TO CROCKING

Dry: Class 4 min / Wet: Class 4 min

## COLORFASTNESS TO LIGHT

60 hours

## CLEANING

**WS: Water/Solvent Cleaner** - Spot clean with a mild solvent, an upholstery shampoo, or the foam from a mild detergent. When using a solvent or dry cleaning product, follow instructions carefully and clean only in a well-ventilated room. Avoid any product that contains carbon tetrachloride or other toxic materials. With either method, pretest a small area before proceeding. Always rinse promptly with clean water.

[Additional cleaning details at www.mayerfabrics.com](http://www.mayerfabrics.com)



© Mayer Fabrics 2024

Specifications are subject to change. Current specifications are available at [mayerfabrics.com](http://mayerfabrics.com)  
Mayer Fabrics | 500 S. Kitley Ave, Indianapolis, IN 46219

TF. 800.428.4415

T. 317.267.2626

F. 317.267.2629