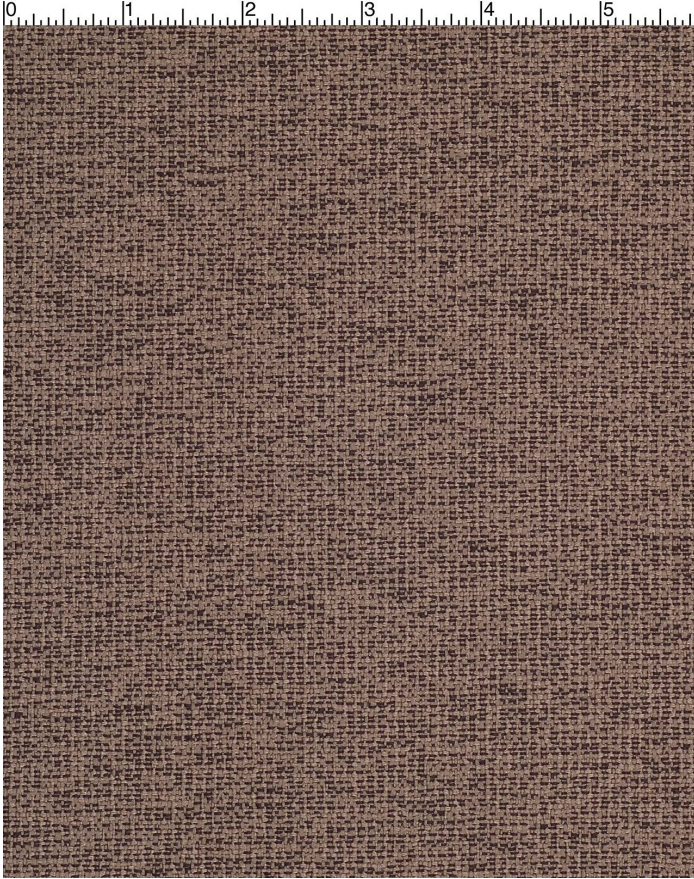


ELEMENT TAUPE

316-010

MAYER FABRICS



CATEGORY
Seating

PROPERTIES

CONTENT
85% Recycled Polyester/85% Pre-Consumer Recycled Polyester/15% Polyester

**ADDITIONAL FINISHING AVAILABLE
(CHECK FOR PRICING)**
NanoGuard

FINISH
INCASE(TM) with Antimicrobial Silver Ion
Technology

WIDTH
54"

WEIGHT
13

SHOWN RAILROADED
No

DIRECTIONALITY
Yes

ROLL LENGTH
60

VISUAL REPEAT
Non-Matching

BREAKING STRENGTH
Warp: 311.0 lbs. / Fill: 213.0 lbs.

SEAM SLIPPAGE
Warp: 86.0 lbs. / Fill: 75.0 lbs.

ABRASION RESISTANCE
Passes 130,000 Double Rubs* (Wyzenbeek/Cotton Duck) *
* Abrasion test results exceeding ACT Performance Guidelines are not an indicator of product lifespan.

PILLING RESISTANCE
Class: 5

COLORFASTNESS TO CROCKING
Dry: Class 4 / Wet: Class 3.5

COLORFASTNESS TO LIGHT
60 hours

CLEANING

WS: Water/Solvent Cleaner - Spot clean with a mild solvent, an upholstery shampoo, or the foam from a mild detergent. When using a solvent or dry cleaning product, follow instructions carefully and clean only in a well-ventilated room. Avoid any product that contains carbon tetrachloride or other toxic materials. With either method, pretest a small area before proceeding. Always rinse promptly with clean water.

[Additional cleaning details at www.mayerfabrics.com](http://www.mayerfabrics.com)